

VACCINE PRIORITY GROUPS



PHASE 1A

**Healthcare Personnel
(~21M)**

Hospitals

Long-term care facilities

Outpatient clinics

Home health care

Pharmacies

Emergency Medical
Services

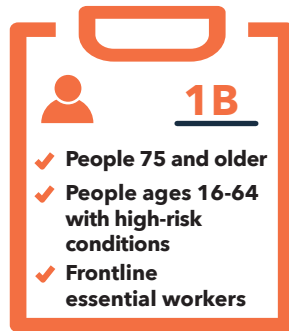
Public health

**Long-Term Care Facility
(LTCF) Residents (~3M)**

Skilled nursing facilities
(~1.3 M beds)

Assisted living facilities
(~0.8 M beds)

Other residential care
(~0.9 M beds)



PHASE 1B

**People 75 and older
(~21M)**

Age is an independent risk factor for severe illness, but risk in older adults is also in part related to the increased likelihood that older adults also have underlying medical conditions.

**People ages 16-64 with
high-risk conditions
(~110 Million)**

Cancer

Chronic kidney disease

COPD

Down Syndrome

Heart Conditions (heart failure,
CAD, cardiomyopathies)

Immunocompromised state from
solid organ transplant

Obesity (BMI of 30 kg/m² or
higher but <40 kg/m²)

Pregnancy

Sickle cell disease

Smoking

Type 2 diabetes mellitus

**Frontline Essential
Workers (~21M)**

First responders
(firefighters, police)

Education (teachers,
support staff, daycare)

Food and agriculture

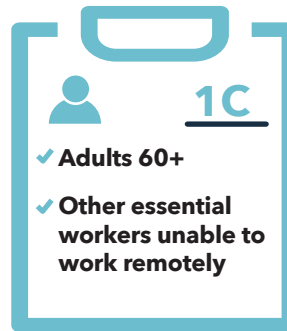
Manufacturing

Corrections workers

U.S. Postal Service workers

Public transit workers

Grocery store workers



PHASE 1C

**Other essential workers
(~57M)**

Transportation and logistics

Food Service

Shelter & Housing
(construction)

Finance

IT & Communication

Energy • Media • Legal

Public Safety (Engineers)

Water & Wastewater



PHASE 2

**People 16 and older
not in Phase 1**

Phase 2 includes all other persons aged ≥16 years not already recommended for vaccination in phases 1a, 1b or 1c

**Young Adults and
Children**

Closely monitored clinical trials in children and adolescents will determine recommendations for use when a COVID-19 vaccine is authorized for use in persons aged <16 years.

More Info

For full CDC & NMDOH Guidelines around vaccine phasing schedule, please visit [NOR-LEA.ORG/COVID](https://www.nor-lea.org/covid)



UNITED IN SERVICE.
TRUSTED FOR LIFE.