

## NMHA COVID-19 Updates

January 5, 2021

### New Mexico COVID-19 Vaccine Calls

The Vaccine Calls with state leadership for NMHA members will continue with the schedule below. Please attend to receive timely updates & participate in open Q & A.

For tomorrow's call, the plan is to have Secretary Collins join to review the next phases of vaccine distribution/allocation.

All times 4:00-5:00 pm

- Wednesday, January 6

<https://hsc-unm.zoom.us/j/96646316285>

Meeting ID: 966 4631 6285      Call In: +13462487799--Passcode: 96646316285#

### Vaccine Ordering Schedule

#### Pfizer Vaccine Ordering and Distribution Cadence

PFIZER		
Orders Placed in NMSIIS	Sites Receive Pfizer Vaccine directly from Manufacturer	Sites Receive Pfizer from DOH Warehouse
Monday – Thursday by noon	Monday the following week	Tuesday the following week*

*\*FOR SITES THAT RECEIVE VACCINE FROM DOH WAREHOUSE ONLY: if not requested, the default delivery day will be the following Tuesday. If need delivery on Wed-Fri, please send an email requesting later delivery date at [covid.vaccines@state.nm.us](mailto:covid.vaccines@state.nm.us)*

#### Moderna Vaccine Ordering and Distribution Cadence

MODERNA**	
Orders Placed in NMSIIS	Sites Receive Moderna Vaccine
Monday – Thursday by noon	Monday the following week
Thursday – Friday by noon	Tuesday the following

*\*\*while inventory is limited, the above schedule illustrates limited days for orders and subsequent expected delivery dates however in the future, we expect ordering times and delivery dates to be expanded to 5 days per week with a 48-hour turn-around time.*

## COVID-19 Vaccine Allocation: Phase 1b & 1c

The CDC regularly updates [their website](#) for the COVID-19 vaccine. Below you will find a snip of CDC's Phase 1b & 1c guidelines [made](#) on December 22, 2020. New Mexico will be [publishing](#) state specific guidance soon, which is expected to align to CDC's and provide more specificity.

As discussed on our vaccine call yesterday, the majority of New Mexico is moving into Phase 1b & hospitals should utilize CDC until state guidance is posted.

### Decision points to transition to other phases

- **Demand in current phase appears met**
  - Appointments filled at 80% or less OR
  - When at least 60% of individuals in phase are vaccinated
- **OR Doses are about to expire within 48 hours**
- **OR When vaccine doses increase substantially**
- **OR Geographic dispersion**
  - Vaccinate families

### Phase 1b

- **Frontline essential workers** such as fire fighters, police officers, corrections officers, food and agricultural workers, United States Postal Service workers, manufacturing workers, grocery store workers, public transit workers, and those who work in the educational sector (teachers, support staff, and daycare workers.)
- **People aged 75 years and older** because they are at high risk of hospitalization, illness, and death from COVID-19. People aged 75 years and older who are also residents of long-term care facilities should be offered vaccination in Phase 1a.

### Phase 1c

- **People aged 65—74 years** because they are at high risk of hospitalization, illness, and death from COVID-19. People aged 65—74 years who are also residents of long-term care facilities should be offered vaccination in Phase 1a.
- **People aged 16—64 years with underlying medical conditions** which increase the risk of serious, life-threatening complications from COVID-19.
- **Other essential workers**, such as people who work in transportation and logistics, food service, housing construction and finance, information technology, communications, energy, law, media, public safety, and public health.

## NMDOH COVID-19 Vaccine Registration System

NMDOH launched a new registration system to support future vaccination populations. It can be viewed here: <https://cvvaccine.nmhealth.org/>

Details were discussed during our membership's call with the state leadership team. Updates include:

- System is currently integrated with NMSIIS weekly but will become an hourly update/integration.
- NMDOH is exploring further integration with the federal data system, Vaccine Finder.
- It is not a requirement that hospitals use this system, however, highly encouraged if they plan on being a community vaccination site and want to coordinate with other local sites such as Walmart and clinics.

**How do hospitals register as a provider in the system?** Activate your location & access system [visit here](#).

If you would like a full demonstration of the system you can reach out to:

- Chris Schroeder ([chris@rtsolutions.com](mailto:chris@rtsolutions.com))
- Dr. Aja Sanzone ([aja.sanzone@state.nm.us](mailto:aja.sanzone@state.nm.us)), or
- Major Travis Swaims ([travis.swaims@state.nm.us](mailto:travis.swaims@state.nm.us))

## COVID-19 Epidemiology Reports

NMDOH collects and analyzes statewide data for COVID-19 positive cases, hospitalizations, and deaths. The reports below reflect these critical data and will be updated weekly.

- COVID-19 Cases Report
- COVID-19 Hospitalization Report
- COVID-19 Mortality Report

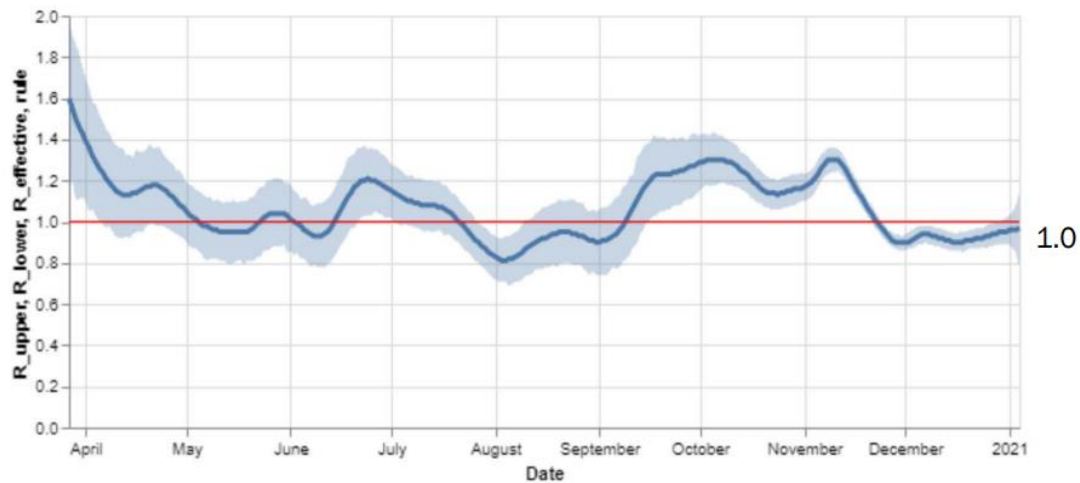
All three reports can be [viewed here](#).

## COVID-19 Modeling in New Mexico

See the most recent Epidemiologic Update located on the [DOH modeling webpage](#).

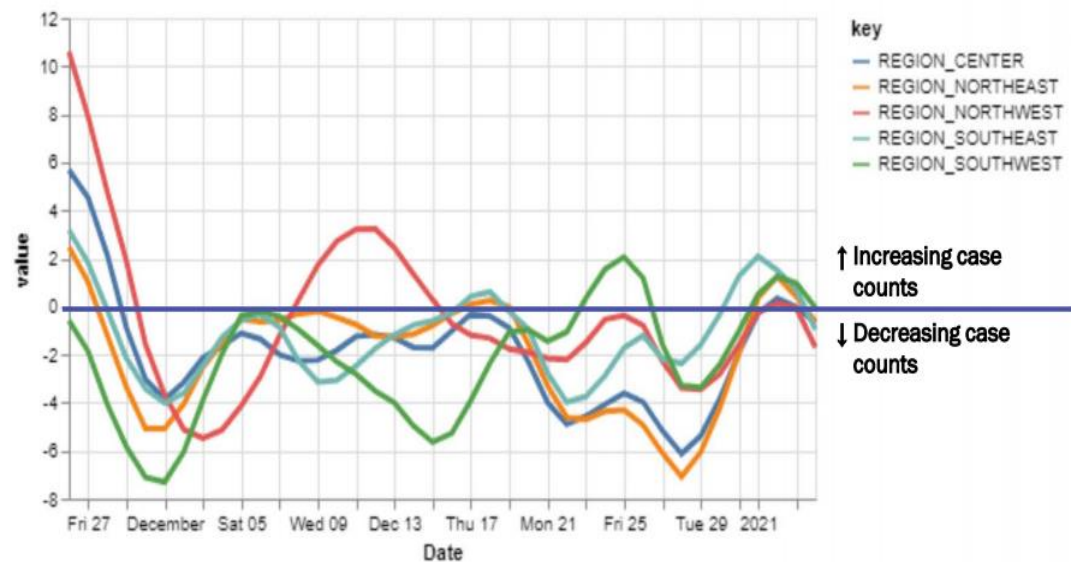
### Statewide R-effective has increased to 1.0.

R\_effective over time, STATE



### All five regions have growth around 0.

14-day relative growth rate (%), Regions



## New Mexico Status Updates

- Case count: Statewide, the decrease in daily case counts may be slowing.
- Hospitalizations: Hospitalizations remain high.
- Deaths: Weekly COVID-19 deaths remain high, but appear to be declining.

For more information, please visit the [Epidemiology Reports](#) page on the NMDOH COVID-19 website: <https://cv.nmhealth.org/epidemiology-reports/>

## NMHA COVID-19 Resource Library

The [COVID-19 Resource Page](#) is updated daily with materials from our alerts and are organized by topic with new releases on top. Need help finding something? We are here. Email Andrea Lohse, [alohse@nmhsc.com](mailto:alohse@nmhsc.com)  
The [NM DOH Public Dashboard](#) also continues to be an excellent source of information.